

MONTHLY MEMBERSHIP PROGRESS REPORT

LOCATION AUSTRALIA

District 201V14

Results as of: 6/30/2023

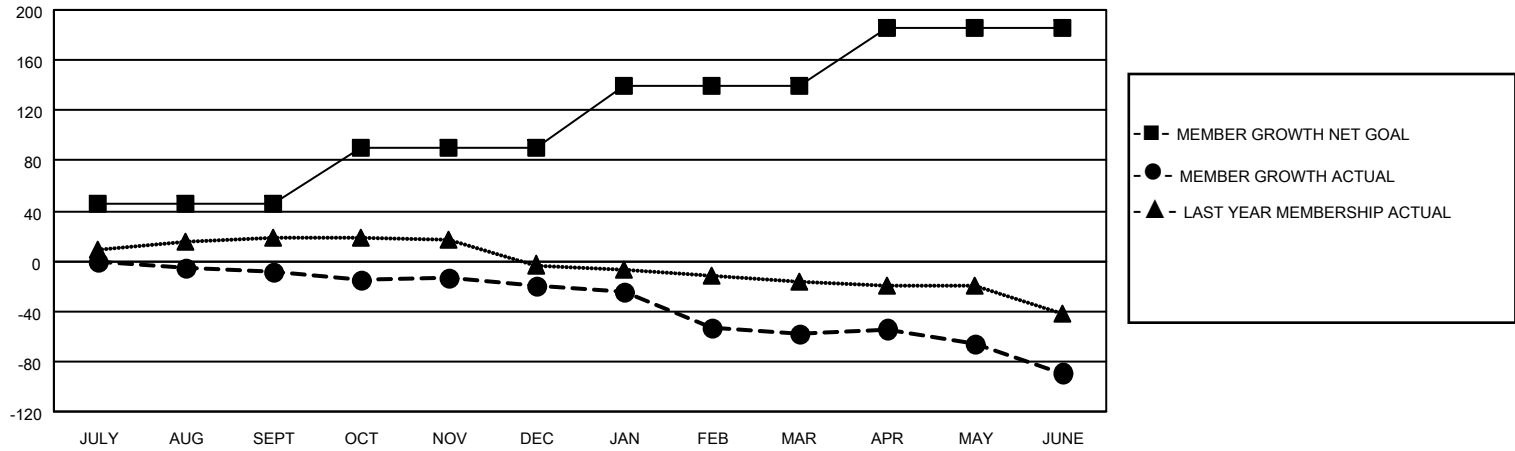
Clubs			
RESULTS FOR 2022-2023			
QUARTER	NEW CLUB GOAL	NEW CLUBS	DROPPED CLUBS
JULY/AUG/SEPT	0	0	0
OCT/NOV/DEC	0	0	0
JAN/FEB/MAR	1	0	0
APR/MAY/JUNE	1	0	0

Members			
RESULTS FOR 2022-2023			
QUARTER	MEMBER GROWTH NET GOAL	MEMBER GROWTH ACTUAL	DROPPED MEMBERS ACTUAL (including transfers)
JULY/AUG/SEPT	45	28	34
OCT/NOV/DEC	45	28	34
JAN/FEB/MAR	50	31	67
APR/MAY/JUNE	45	31	56

GOALS AND ACTUAL NEW CLUBS CUMULATIVE



GOALS AND ACTUAL MEMBERS CUMULATIVE



DROPPED CLUBS: 0	
DROPPED MEMBERS	
DECEASED	9
CLUB CANCELLED	0
OTHER	182
TOTAL	191

42 CLUBS OF 73 ADDED 1 OR MORE NEW MEMBERS

[CLICK HERE FOR CUMULATIVE MEMBERSHIP DATA](#)

<u>GENDER DISTRIBUTION</u>	
MALE	786 (68.77%)
FEMALE	355 (31.06%)
NON BINARY	0 (0.00%)
PREFER NOT TO ANSWER	2 (0.17%)
TOTAL FAMILY UNIT MEMBERS 127	
FAMILY MEMBERS PAYING HALF DUES 64	